



## INSET LOG INSTRUCTIONS



## IMPORTANT

### WARNING: DC SUPPLY 12V

- IMPORTANT: Each log must be wired in the correct order and direction or a failure will occur. Disconnect the fire from the mains power supply until installation is complete.



## BOX CONTENTS



**E-GLO LOGS**



**LAVA ROCK**



**CLEAR GLASS**

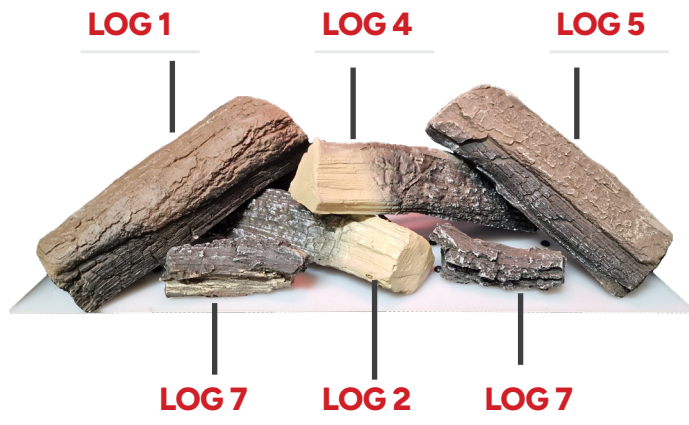
## E-FX LOG INSTRUCTIONS

### IMPORTANT

Each log must be wired in the correct order and direction or a failure will occur. Refer to the instructions before undertaking installation of the logs. Disconnect the fire from the mains power supply until installation is complete.

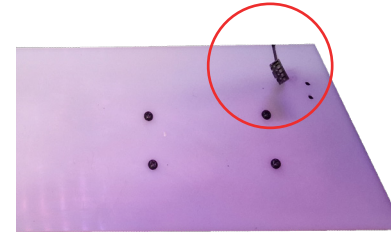
### 01 - PLACE THE LOGS

Start by unwrapping the logs and laying them out as below.



## E-FX LOG INSTRUCTIONS

### 02 - CONNECT THE LOGS



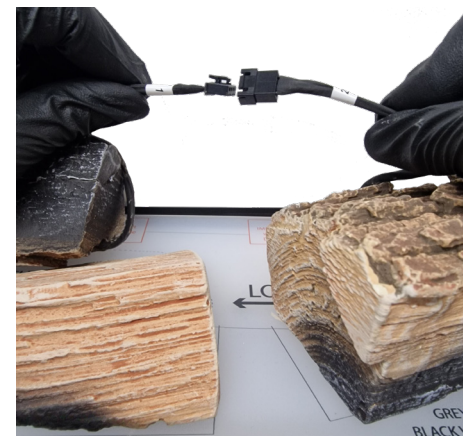
Starting at the right hand side again, plug the log into the connector on the right hand side of the fire.

### IMPORTANT

Make sure that the connectors are fitted securely and fully engaged. Poor connections lead to faults.

### 03 - CONNECT THE LOGS

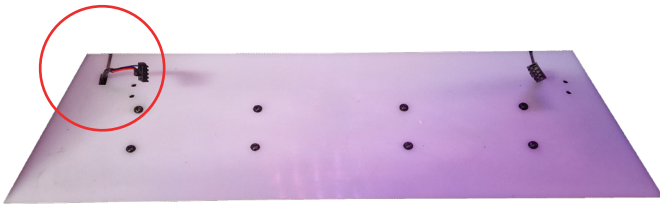
Connect the logs together using the wires. You can only plug them in one way. Work your way from right to left, making sure all connections are tight and secure.



## E-FX LOG INSTRUCTIONS

### 04 - CONNECT THE FUEL BED

Connect the far left log to connector on the left of the fuel bed. This completes the log wiring.



### 05 - HIDE THE CONNECTORS

Now everything is connected, make sure all the wires are hidden behind or underneath the logs, making sure you can not see them. You can place the logs on top of the wires to help hide them.

It is a good idea to test the fire at this stage and make sure all connections are working.



## E-FX LOG INSTRUCTIONS

### 06 - ADD THE LIGHT EMBERS

Now everything is laid out and connected, with the wires hidden, use the glass and lava rock to decorate the fuel bed. You can use this aggregate to help hide the cables. Make sure you leave room for plenty of light to come through the fuel bed. This completes the log set up.





[www.flameritefires.com/](http://www.flameritefires.com/)

Flamerite International Ltd, Lichfield Road Industrial Estate, B79 7UL

**Tel:** 01543 251122 | **Email:** [info@flameritefires.com](mailto:info@flameritefires.com)

**These products are only suitable for well insulated spaces or occasional use.**

All products are protected by patents, registered design and intellectual property rights.

Flamerite International Ltd. will protect these rights. All specifications are correct at the time of publishing but are subject to change.

